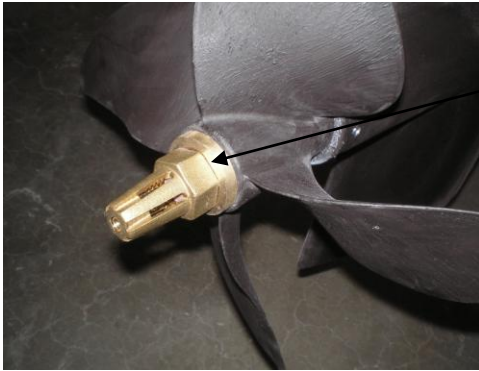


# Propeller Installation and Removal



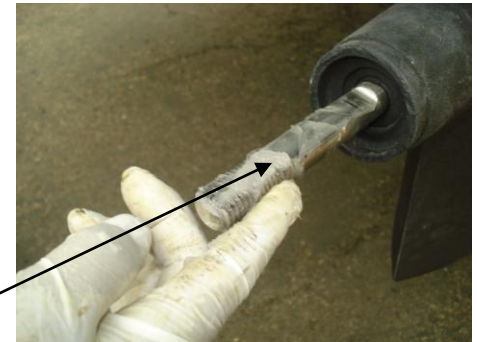
The propeller is held onto the shaft using a bronze nut and a carter pin. Remove the carter pin and then the nut. Hold onto the prop with one hand and loosed with a wrench with the other hand as shown.

**Do not over tighten when installing. A snug fit is all that is required.**



The prop will not need a special tool for removal. Pull prop off by hand or if necessary tap gently the blades close to the hub with a rubber mallet to loosen.

It is imperative to apply a synthetic grease material to the shaft before re-installing. This keeps air pockets from forming between the hub and the metal which can cause corrosion. Install new carter pin.



The last and very important part of the propeller assembly is the electrolysis Zinc protector attached to the bronze nut with one crew.

